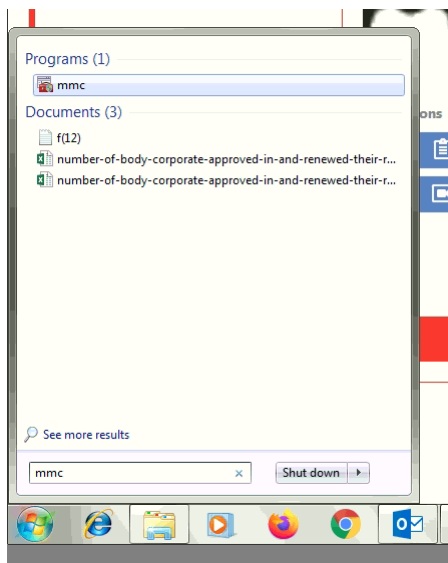


## How to fix the SSL pop up screen issue in windows 7 computer when accessing outlook

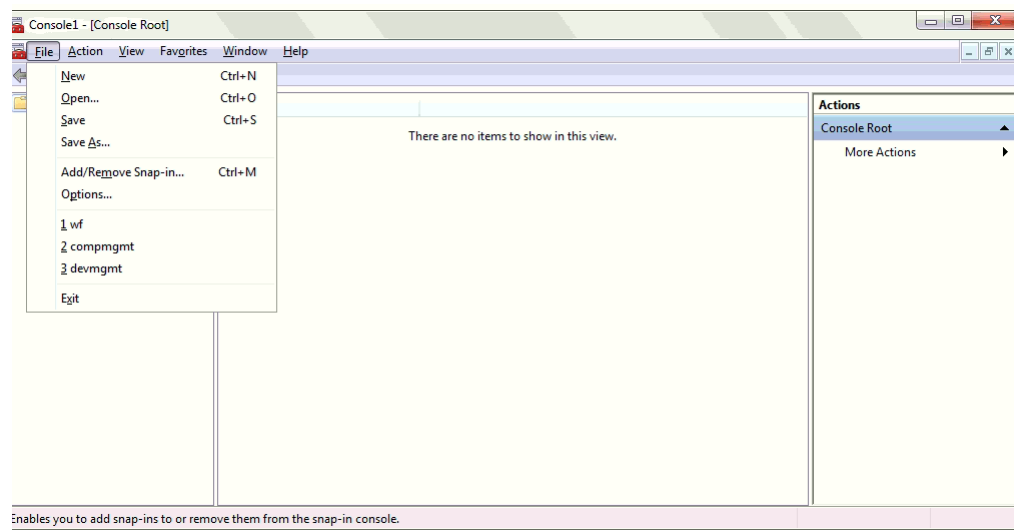
Download the root cert from  
<https://letsencrypt.org/certs/isrgrootx1.der>

To a folder for example c:\rootcert

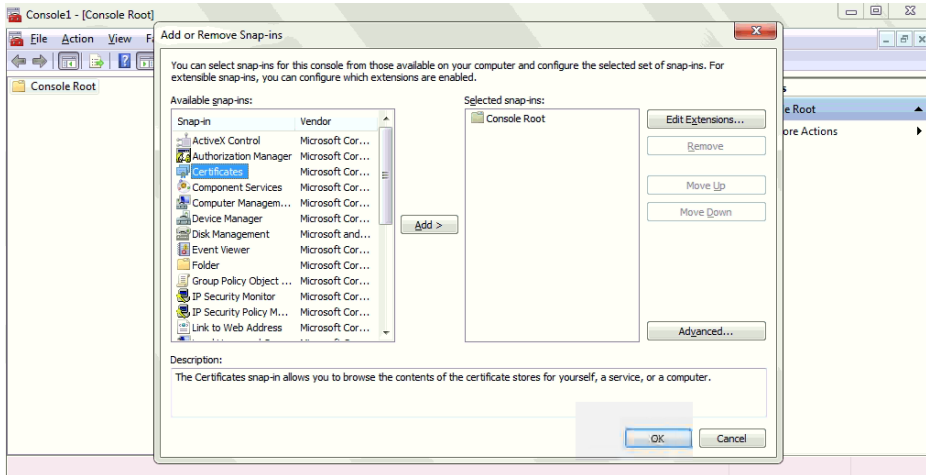
Click on the start button and search for “mmc”



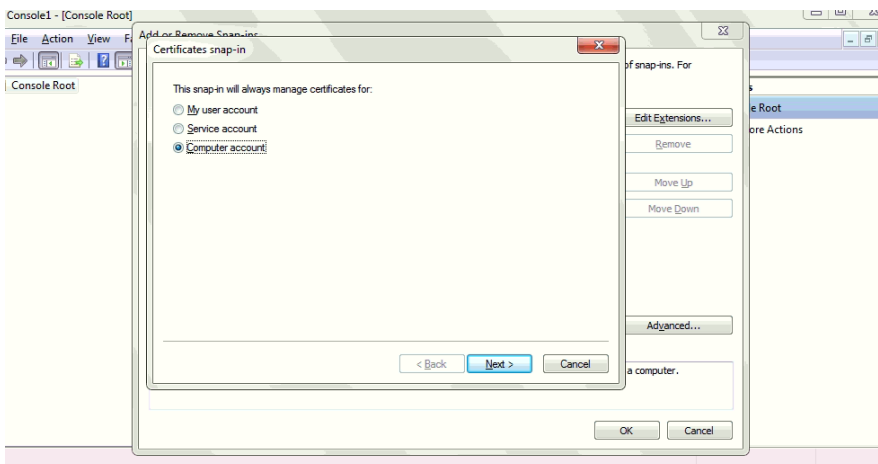
Click on the Add/Remove Snap-in.... option



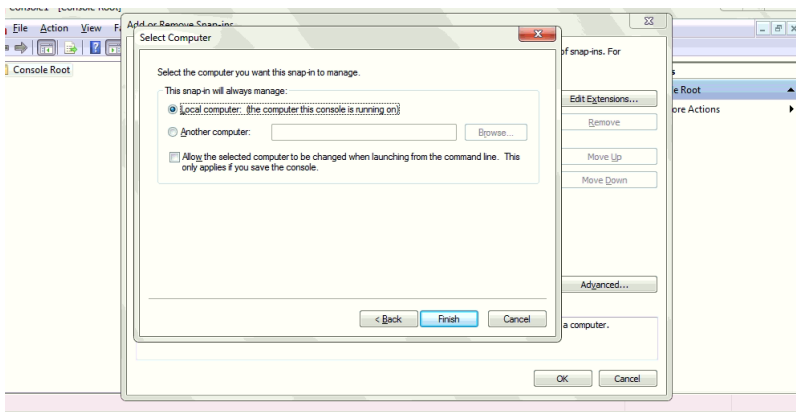
## Choose Certificates



## Choose "Computer account" and click "Next"

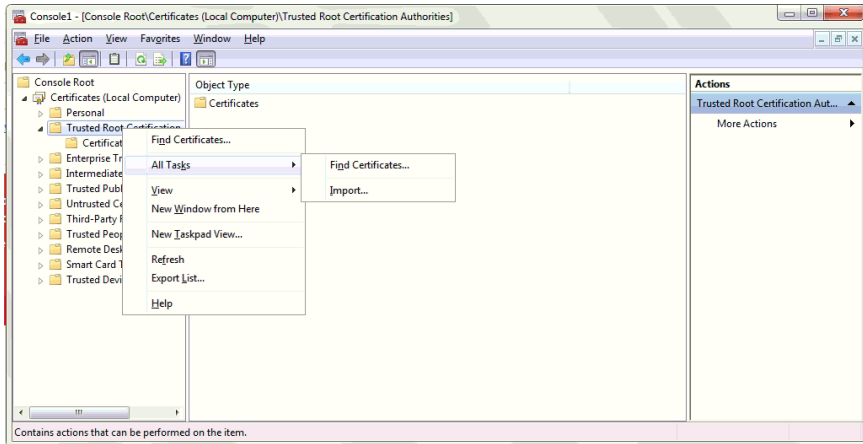


## Click "Finish"

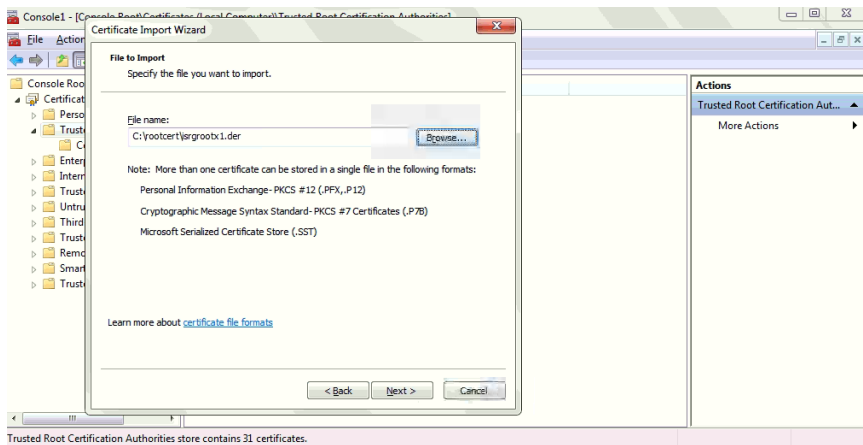


Expand certificates option - choose "Trusted Root Certificates"

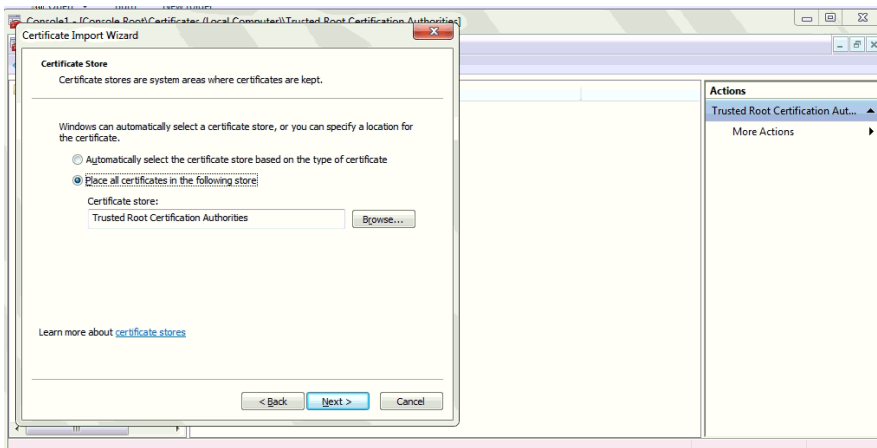
Right click and choose "All Tasks" and choose "Import"



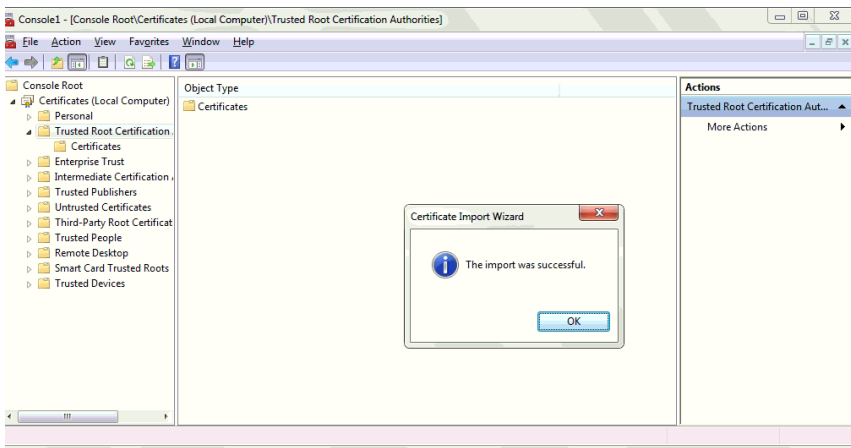
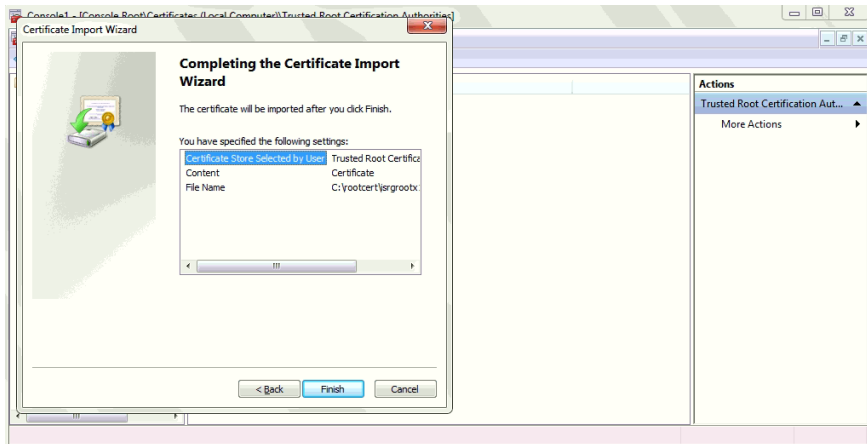
Choose the downloaded root cert isrgroot1.der file to import.



Click "Next"



Click "Finish"



Completed .